

Order:

Ref:

Article: 91754

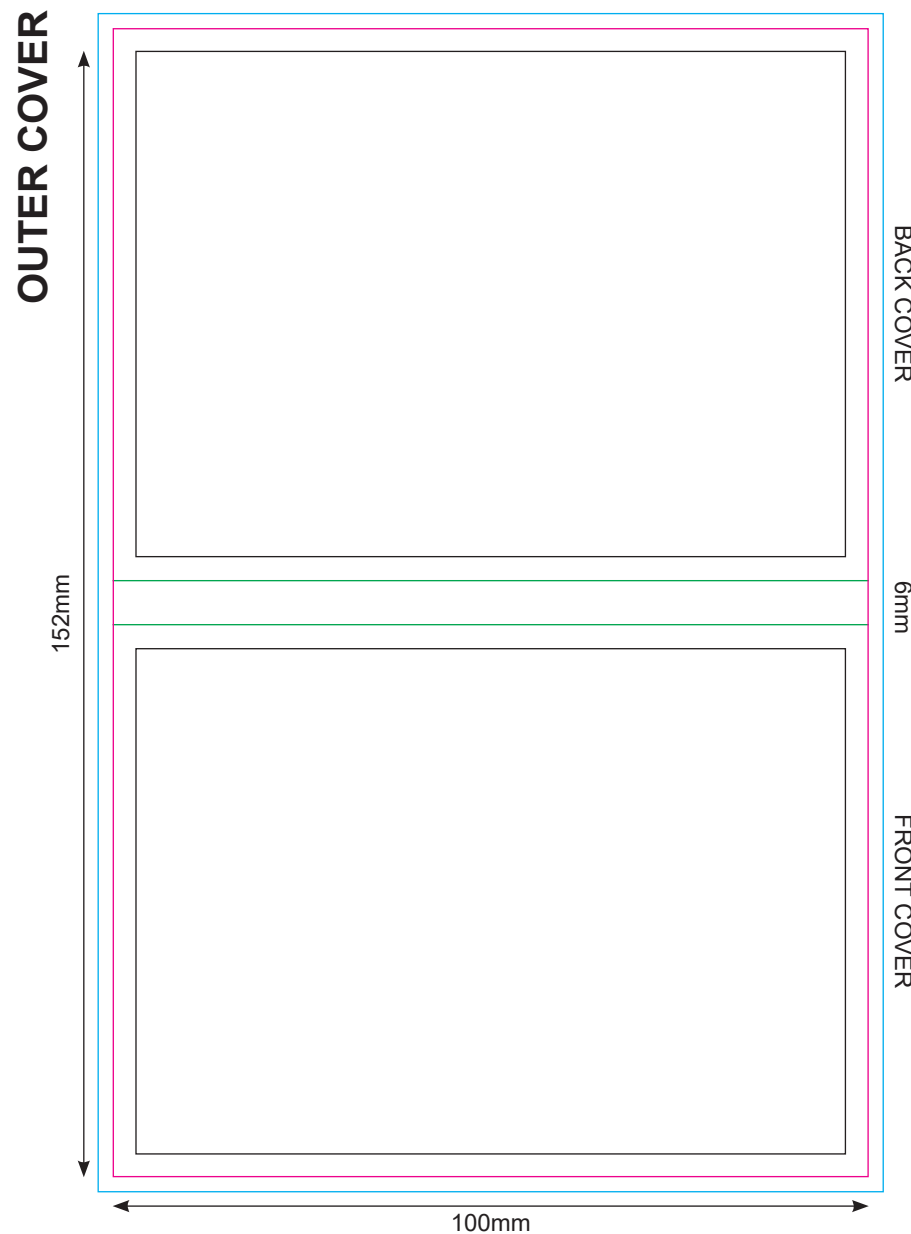
Scale: 100%

Imprint colours:

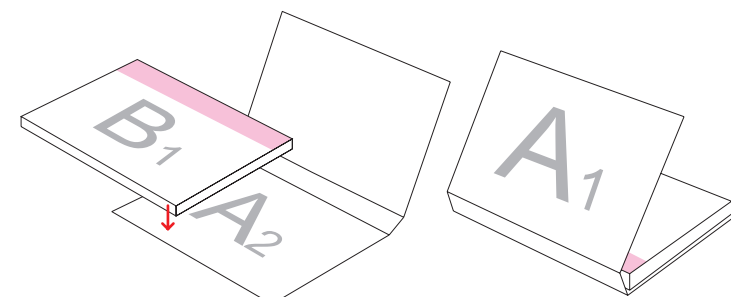
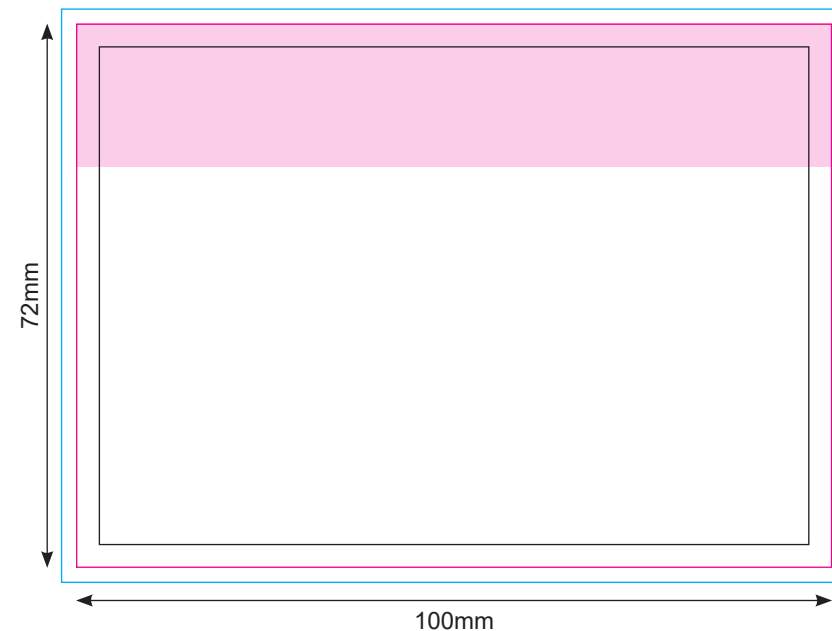


Imprint technique(s):

Comment:



## STICKY NOTES



Key:

- Finished component size
- Bleed area. In case of bleed imprint, please extend it until blue line
- Safe print area. Keep all important text and graphics within this area
- Axis of the Crease
- Glue
- Edge of glue